

Letter to Parents of Parkland Elementary School Students

September 12th, 2012

Dear Parent(s):

The Board of Education of School District No. 43 (Coquitlam) is proposing to create eight single family residential lots along the Como Lake Avenue frontage of the Parkland Elementary School site. The single family lots will have a site area of approximately 6,000 square feet as shown in red on the attachment. The single family lots will utilize a total area of approx. 1.26 acres. This represents approx. 12% of the existing school site area of 9.23 acres.

Generating value from assets that are not needed for school purposes will provide the School District with additional funds for capital improvements in our community. Funds generated are intended to supplement, not replace, capital funding provided by the Ministry of Education.

The existing playing field at Parkland Elementary School will not be changed or reduced in size. No school programs will be affected, as short and long term enrolment projections both indicate continued stable enrolment between 300 and 350 students.

A drop-in information session will be held at Parkland Elementary School from 6:00 to 8:00 pm on Wednesday, September 26th to answer any questions you may have and receive input on the proposed disposition.

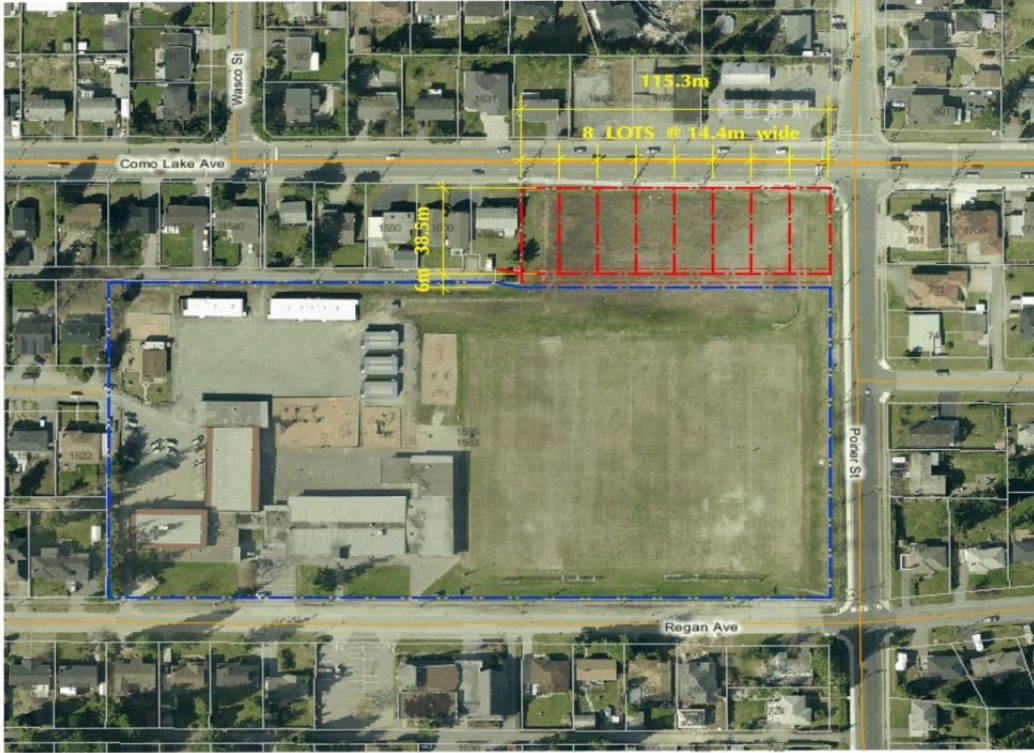
If you would like further information on this proposed development, please contact:

Richard Humphreys
Secretary-Treasurer
School District #43 (Coquitlam)
604 939 9201
rhumphreys@sd43.bc.ca

Sincerely,

Thomas Grant
Superintendent of Schools

PROPOSED PARKLAND ELEMENTARY SCHOOL RESIDENTIAL LOTS



Parkland Elementary School Site

